



MASSEY FERGUSON

130 HP

MF TELEHANDLERS

MF9407S



Features that fulfil every need

01 Quick hydraulic couplers

for fast, efficient and easy change of equipment.

02 Intelligent hydraulics

All models are fitted as standard with a load sensing valve block. Multiple functions can be done at the same time.

03 Unbeatable lift capacity

from the strength boom – up to 7m high and 3.5 tons. Boom suspension is standard for maximum comfort in transport conditions.

04 Unbeatable comfort and visibility

The MF9000 cab environment is set with the highest levels of comfort and controls, with maximum all-round visibility.

05 Powerful and fuel efficient engine

with easy access to maintenance.

06 Three semi-automatic selectable steering modes

to provide optimum manoeuvrability in all operating conditions.



MF9407S Design

Handling jobs effortlessly and efficiently, the MF9407S provides you with the optimum accessibility and manoeuvrability that you require. This machine also gives you more lift height, a longer reach and the ability to lift heavier payloads. With the right attachment, the MF9407S can achieve paramount performance in a wide variety of applications around the farm.

Excelling in both loader operations where plenty of hydraulic flow is provided through to 40 km/h road transport applications, where power and comfort is essential, MF9407S boasts impressive capabilities, whether you're moving bales or shifting feed. This new unit also offers essential and unbeatable visibility thanks to the new cab design that allows the operator to work unhindered and in complete safety.



The 130 hp MF9407S is a serious piece of kit that will prove to be invaluable around the farm. Speed, agility and strength are just some of the key features that make this the ideal multipurpose workmate around all kinds of farms.



The chassis is very narrow in order to provide maximum turning angle

Boom and chassis design

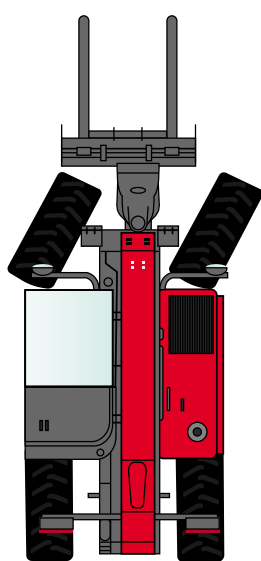
The new, slender chassis with a shorter overall length ensures stability and excellent manoeuvrability when you need it the most, as well as reassuring durability in the heaviest agricultural operations. A lower boom pivot allows unobstructed visibility around the entire machine for safer, more productive operations.

Boom suspension is standard, which greatly increases operator comfort, for example, when towing a large trailer of straw at 40 km/h during road transportation.

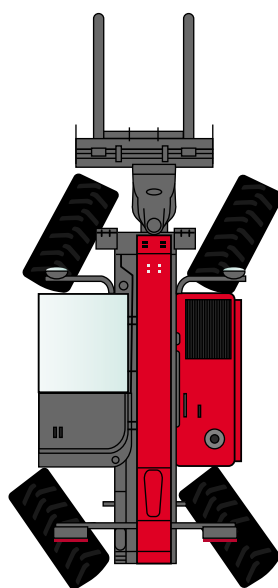
Steering functions

All models have three selectable steering modes, two-wheel steer, four-wheel steer and crab-steer to provide optimum manoeuvrability in all operating conditions.

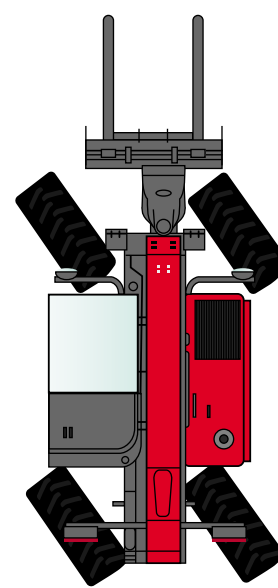
Changing from one mode to another is very easy. Just pre-select the mode by pressing the switch in the cab and the mode will be engaged.



Two-wheel steering mode
– for road and high speed use.



Four-wheel steering mode
- for minimum turning circles.



Crab-steer mode
- for efficient filling and grading and working alongside walls and in confined spaces.

Materials handling made easier thanks to up-to-date ergonomic design



Operator area

The superior operator environment consists of a spacious cab interior with excellent all-round operator visibility and a reduced noise level. The cab layout is extremely ergonomic; controls and instruments are easy to use and have been designed to help make applications easier to manage.

The new multifunction joystick is close to hand, ensuring efficiency, quick and easy operation and total productivity. A digital display screen located on the dashboard shows valuable information such as maximum speed and flow of hydraulics, job hours, vehicle or engine speed, boom angle, speed management and auxiliary hydraulics.



Multifunction Joystick

The positioning of the joystick falls naturally to hand and incorporates all the main controls needed for operating the boom and attachments.

Joystick control

- 01 & 02 Dashboard display settings
- 03 Boom extended/retracted
- 04 3rd function
- 05 Boom suspension
- 06 Forward, neutral, reverse selection

* Model shown MF9407S Xtra



Operator environment

We take operator comfort very seriously, it has always been a priority to ensure that the operator is happy with the layout and design of the machines' interior environment. The new, curved shape cab design and the low boom pivot point ensures unsurpassed visibility all around the machine, especially from the rear of the cab whilst working in tight and narrow spaces. An unobstructed view of front attachments ensures safe and precise loading and unloading, making it easier and safer to position bales or pallets at elevated working heights.



Powerful, assured hydraulics

Intelligent hydraulics

A **powerful and consistent hydraulic system** is paramount to the everyday productivity of a telehandler. There is a load sensing spool valve management system on all models.

All functions are electro-hydraulic and proportional thanks to the load sensing hydraulic system. It's very accurate and easy to use plus it allows the operator to simultaneously use 3 functions, creating productivity and reducing downtime.

The **load sensing pump** on the MF9407S model supplies **190 litres of oil per minute**, offering outstanding capabilities and performance, even at low engine speeds. Therefore, you can work at significantly lower speeds, **consume less fuel** and can count on remarkably shorter working cycles. The load sensing pump only supplies oil when hydraulic power is required. This prevents unnecessary oil heating and power loss. If required, the full oil volume is available immediately.



Connecting and disconnecting is simple thanks to the connector block and its pressure release system.



Integrated, pressure-release quick couplers are conveniently mounted on the boom head for fast, efficient and easy coupling and uncoupling of implements.



Class leading precision

High spec boom controls, thanks to 4 electro hydraulic load sensing spool valves, will allow the operator to simultaneously use 3 functions with high precision.

The oil goes exactly where the operator wants it to go, it does not simply go where it's easy. Boom suspension also provides outstanding comfort for all transport applications.



Smooth operation from the transmission



Transmission

The two speed **hydrostatic gearbox** offers simplicity and smoothness of operation as well as high-performance output and capability. It has speed capabilities of up to 40 km/h with **two mechanical gears** comprising of **two speeds** which allows the customer to choose the best speed for the

application and gives excellent performance in road transport. It also has an easy-to-set **creeper function** for operations that demand low speed at higher engine revs. This feature provides more accuracy and control for operation such as sweeping, silage distribution, and straw spreading.

- Hydrostatic transmission allows very accurate and very smooth control and operation of the machine.
- Unique 4 speed (2 mechanical x 2 hydraulic) allows the operator the most accurate control during material handling.
- Choose the best ratios for ergonomic control of the machine.
- Excellent road performance thanks to two real mechanical gears.



Straightforward engines

Thoughtful engineering and design means that you receive the best features within the MF94075S telehandler. Powerful, efficient engine, high-performance transmissions and precision hydraulics guarantee a trustworthy ally for many of the jobs you need to get done quickly on the farm.



Engine

The MF94075S has a powerful, efficient engine, providing plenty of torque in applications that demand more traction and force. The larger and improved design of the engine cooling system ensures continuously high performance in demanding and confined operations. The engine is now

mounted lengthways, ensuring space for the boom to sit without impeding visibility when in the cab. Given this, access to the engine area for servicing and maintenance is easy and straightforward.

- Low maintenance, high performance engine.
- Powerful and efficient.
- The engine remains parallel to the boom, providing excellent access for inspection of the engine bay area.
- Straightforward technology for a more productive working day.
- Fan inverter for easy cooling package cleaning.



Servicing

Servicing your Massey Ferguson Telehandler is easy. Well positioned service points means access is quick and simple.



Side opening of the bonnet gives you wide, open access to the engine, air filter, cooling system and air conditioning system – providing quick serviceability to all the major points.



The air filter is removed easily for checking and cleaning and a reverse fan is included as standard to ensure ease of operation. Just press the switch and the fan reverses its cycle, blowing out any dust, straw and other material that may become stuck to the cooling package.

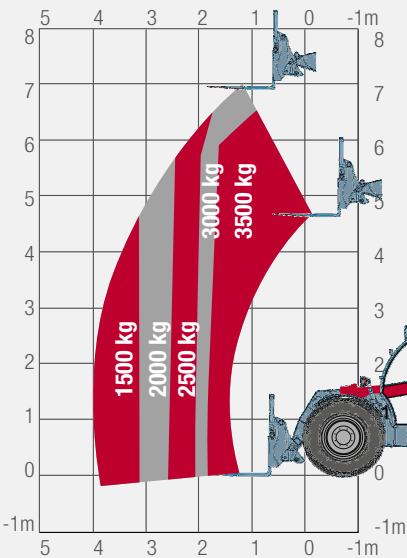


From ground level, you can easily lift the hood to check the engine and radiator. All routine engine, hydraulic and transmission service points are easily located for fast and simple maintenance, keeping downtime to a minimum.

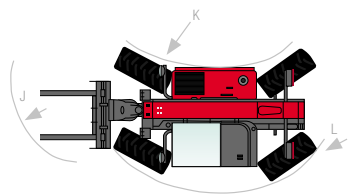
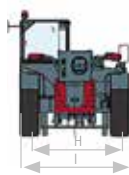
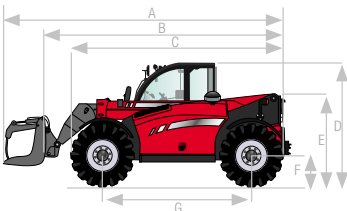
Lift capacities

MF9407S

These load capacity illustrations clearly show that the MF9470S offers outstanding lift performance in its respective class.



MF9407S		
A	mm	6074
B	mm	4869
C	mm	4145
D	mm	2374
E	mm	1752
F	mm	560
G	mm	2870
H	mm	1895
I	mm	2300
J	mm	4970
K	mm	3714
L	mm	1092



Specifications as standard

Loader performance (norm EN 1459: 1998 Annex B)		MF9407S		Hydraulics		MF9407S	
Max. lift capacity				All hydraulic function proportional and electro hydraulics		•	
at ground level kg		3,500		End of line hydraulics		•	
at full lift height kg		3,000		Mechanical implement attachment		•	
at load configuration 2 m length @ 4 m height kg		3,000		Transmission			
Breakout force kN		6,200		Hydrostatic		•	
Max. lift height m		7		Inching pedal		•	
Forward reach - boom extended m		4		Speed Control System		•	
Hydraulic system				Engine			
Boom - pump capacity litre/min		190		Automatic isolator switch		•	
Transmission				Steering			
Type		Hydrostatic		Three steering modes with manual alignment		•	
Mechanical gears		2		Other features			
Hydraulic speeds		2		Forward/Neutral/Reverse control on joystick		•	
1st gear speed* Km/h		6		Hydraulic implement attachment		•	
2nd gear speed* Km/h		12		Reverse fan		•	
3rd gear speed* Km/h		18		Boom suspension		•	
4th gear speed* Km/h		40		Air conditioning		•	
Engine				Aerial speakers		•	
Capacity/no. cylinders litre/no.		4.4/4		Roof wiper		•	
Injection		ETA		Pneumatic seat		•	
ISO hp @ 2200 rev/min		130		Boom-mounted work light		•	
Max. torque (ISO 14396) Nm		510					
Tyres							
Standard		460/70R24					
Brakes		Oil immersed					
		Front and rear axles					
Weights and capacities							
Weight, without implement kg		7130					
Fuel tank capacity litres		138					
Cycle times							
Boom raised (seconds)		4.9					
Boom extended (seconds)		4.8					
Bucket crowded (seconds)		2.3					

* with max speed specified machine • as standard



MASSEY FERGUSON

An all new generation.



facebook.com/AGCOcorp

twitter.com/AGCOcorp

youtube.com/AGCOcorp

blog.agcocorp.com



MASSEY FERGUSON is a worldwide brand of AGCO corporation.
© AGCO Limited. 2014